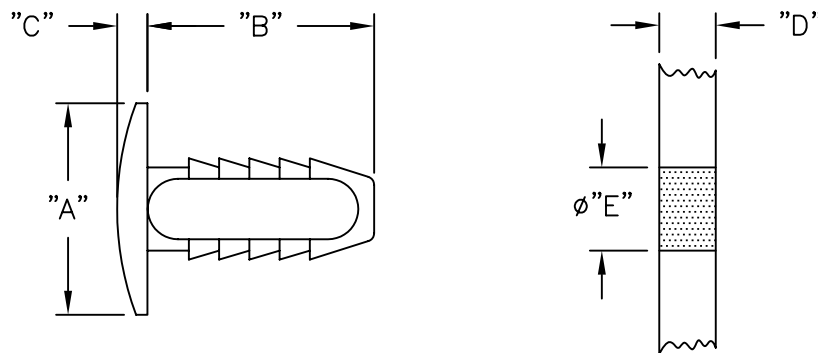


PART NO.	DIM. "A"	DIM. "B"	DIM. "C"	PANEL THICKNESS "D"	HOLE DIA. "E"
NR-92-1	.551 (14.0)	.591 (15.0)	.079 (2.0)	.118-.433 (3.0-11.0)	.228 (5.8)
NR-92-2	.630 (16.0)	.748 (19.0)		.118-.591 (3.0-15.0)	
NR-92-4	.709 (18.0)	.906 (23.0)		.118-.748 (3.0-19.0)	



NOTES:

1. MATERIAL: NYLON 6/6 (RMS-01).
2. COLOR: NATURAL.
COLOR BLACK AVAILABLE BY SPECIAL ORDER.
TO ORDER ADD SUFFIX "B" TO PART NO.
EXAMPLE: NR-92-XB

<table border="1"> <tr> <td>B</td> <td>SEE ECN #485 FOR CHANGES</td> <td>SM 10.10.02</td> </tr> <tr> <td>A</td> <td>CHANGED FILE NO.</td> <td>SM 03.12.02</td> </tr> <tr> <td>REV</td> <td>DESCRIPTION</td> <td>ENGR DATE</td> </tr> </table>			B	SEE ECN #485 FOR CHANGES	SM 10.10.02	A	CHANGED FILE NO.	SM 03.12.02	REV	DESCRIPTION	ENGR DATE	<table border="1"> <tr> <td colspan="4">TITLE: NYLON RIVET</td> <td colspan="2"> </td> <td colspan="2"> DWG IN IN (MM) FINAL </td> <td colspan="2"> </td> </tr> <tr> <td colspan="2">TOLERANCES UNLESS NOTED .XX=±.010 .XXX=±.005 FRAC=±1/64 ANG=±1'</td> <td>FILE # NR</td> <td>DWN: E.P.</td> <td colspan="2">APP:</td> <td colspan="2">PART #</td> <td colspan="2">PRINT TYPE</td> </tr> <tr> <td colspan="2"></td> <td>MAT'L: SEE NOTES</td> <td>DT: 9-23-98</td> <td colspan="2">DT:</td> <td colspan="2">NR-92 SERIES</td> <td colspan="2">CA</td> </tr> <tr> <td colspan="2"></td> <td>RE: RICHCO, INC.</td> <td colspan="2">RICHCO INC. PO BOX 804238, CHICAGO, 60680 (773) 539-4060</td> <td colspan="2"></td> <td colspan="2"></td> </tr> </table>				TITLE: NYLON RIVET						DWG IN IN (MM) FINAL				TOLERANCES UNLESS NOTED .XX=±.010 .XXX=±.005 FRAC=±1/64 ANG=±1'		FILE # NR	DWN: E.P.	APP:		PART #		PRINT TYPE				MAT'L: SEE NOTES	DT: 9-23-98	DT:		NR-92 SERIES		CA				RE: RICHCO, INC.	RICHCO INC. PO BOX 804238, CHICAGO, 60680 (773) 539-4060					
B	SEE ECN #485 FOR CHANGES	SM 10.10.02																																																				
A	CHANGED FILE NO.	SM 03.12.02																																																				
REV	DESCRIPTION	ENGR DATE																																																				
TITLE: NYLON RIVET						DWG IN IN (MM) FINAL																																																
TOLERANCES UNLESS NOTED .XX=±.010 .XXX=±.005 FRAC=±1/64 ANG=±1'		FILE # NR	DWN: E.P.	APP:		PART #		PRINT TYPE																																														
		MAT'L: SEE NOTES	DT: 9-23-98	DT:		NR-92 SERIES		CA																																														
		RE: RICHCO, INC.	RICHCO INC. PO BOX 804238, CHICAGO, 60680 (773) 539-4060																																																			